

**Porto.**

GUIDE TO SUPPORT THE INTEGRATION OF MIGRANTS

# Education



Access to school,  
Training and  
learning opportunities.

## **02** GUIDE TO SUPPORT THE INTEGRATION OF MIGRANTS

### **Title**

Guide to Support the Integration of Migrants – Education

### **Coordination**

Municipality of Porto

Municipal Portfolio for Social Cohesion, Health and Civil Protection – Gabriela Queiroz

Municipal Portfolio for Education – Matilde Rocha

### **Technical Coordination**

Municipal Directorate of Education

Otilia Paula Castro

Berta Lima

Municipal Department of Social Cohesion

Raquel Castello-Branco

Liliana Pires

Paula Ferreira

Catarina Lameira

### **Editing**

Porto City Council

[www.cm-porto.pt](http://www.cm-porto.pt)

### **Consulting Team**

**K SOCIAL** Consultoria e Inovação, lda.

[www.ksocial.pt](http://www.ksocial.pt)

### **Graphics and Pagination**

**HOVO** Comunicativo, lda.

[www.hovo.pt](http://www.hovo.pt)

### **Issue Date**

December 2025

### **Print Date**

2026

### **Funding Entity**

PRR – Portugal's Recovery and Resilience Plan

# Porto takes care of its own

“

Porto is the place where, for me, all the wonders and all the anguishes begin.

**SOPHIA DE MELLO  
BREYNER ANDRESEN**

This booklet is part of the Porto City Council's Guide to Support the Integration of Migrants. Use it to learn about the rights and duties of the immigrant and find practical answers to questions related to **Education**.

- > **How does education work in Portugal?**
- > **How do I enrol my children in a public school?**
- > **Which schools are there in Porto?**



## 04 GUIDE TO SUPPORT THE INTEGRATION OF MIGRANTS

There are four additional booklets in this collection, designed to help you build a full life as a Portuguese citizen.

### Employment and Entrepreneurship

- › What are the requirements to work legally?
- › What types of jobs are available?
- › How can I create my own business?



### Socio-Legal Regularization

- › How can I enter and stay in Portugal legally?
- › What types of visas are there, and how to obtain them?
- › What are the most important documents to keep?



### Health

- › What are the health services in Porto?
- › How to access the National Health Service (SNS)?
- › How to protect my health and that of my family?



### Social Protection and Citizenship

- › Which institutions and associations can support my integration?
- › What support can I receive in cases of particular vulnerability?
- › What are the fundamental rights and duties to reside in Portugal?



# Contents

<b>CAP. 1</b>	
<b>FRAMEWORK</b>	<b>07</b>
<b>CAP. 2</b>	
<b>EDUCATION</b>	<b>09</b>
1. Porto, an educating city	10
2. Porto, a child-friendly city	12
<b>CAP. 3</b>	
<b>ORGANIZATION OF THE EDUCATION SYSTEM</b>	<b>14</b>
1. What educational institutions are available in the city of Porto?	16
2. Where can a child or young person be enrolled?	16
3. How is the school year organized?	17
4. How is the portuguese language integrated into the curriculum of migrant children or young people?	18
5. What is the role of the legal guardian?	18
6. What responses are available in public schools for children and young people with special health care needs?	19
> Learning support centres (Centros de Apoio à Aprendizagem – CAA)	19
> Reference schools	20

<b>CAP. 4</b>	
<b>WHAT SUPPORT IS AVAILABLE FOR CHILDREN AND YOUNG PEOPLE?</b>	<b>21</b>
1. School social action	21

<b>CAP. 5</b>	
<b>PROGRAMMES AND PROJECTS</b>	<b>25</b>

<b>CAP. 6</b>	
<b>HOW CAN CHILDREN AND YOUNG PEOPLE GET TO SCHOOL?</b>	<b>31</b>
1. Public transport network of the municipality of Porto	31
2. Intermodal transport ticket – free Andante	32

<b>CAP. 7</b>	
<b>PORTO SCHOOLS NETWORK</b>	<b>33</b>
1. School clusters	33
2. Vocational schools	38
3. Reference schools	42

<b>CAP. 8</b>	
<b>SUPPORTING LEGISLATION</b>	<b>43</b>

 <b>CONTACTS</b>	<b>44</b>
---	-----------

 <b>GLOSSARY</b>	<b>47</b>
---	-----------

## CAP. 1

# Framework

**As part of the city's commitment to welcoming and supporting those who choose Porto as their place to live,** while responding each person's specific needs, this Migrant Reception Guide was created as a reference and support tool for the integration of migrant children and young people in schools and in education and training pathways.

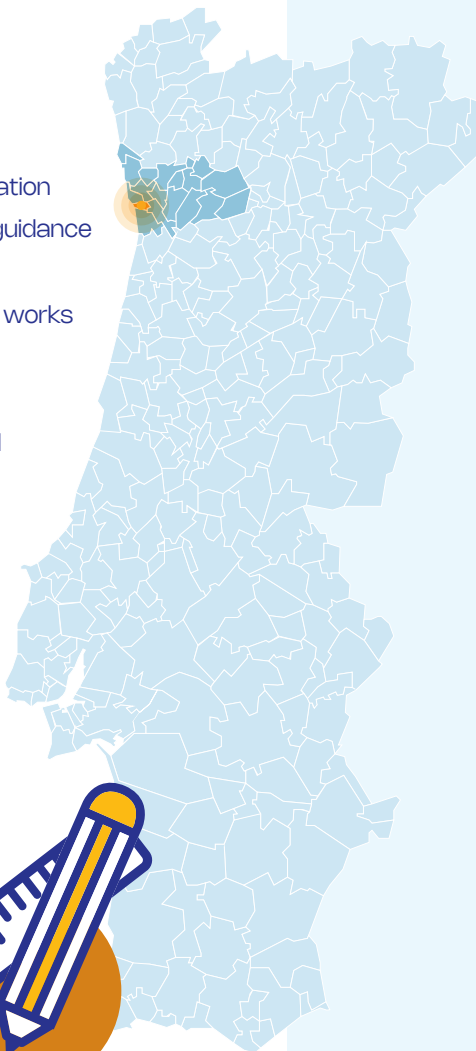


## 08 GUIDE TO SUPPORT THE INTEGRATION OF MIGRANTS FRAMEWORK

This booklet brings together clear information on rights and duties, as well as practical guidance in the field of education, including:

- > how the Portuguese education system works
- > the school calendar
- > available support measures
- > municipal educational programmes and projects offered to children and young people enrolled in public schools.

It also includes a set of useful contacts from schools, school clusters, and other relevant entities, with the aim of supporting the integration of children, young people and their families in the city of Porto.



CAP.  
2

# Education

Education is one of the most decisive areas of human development, and one to which the Municipality of Porto gives particular importance, treating it as a key priority of its intervention. Going far beyond the school setting, Education has become an increasingly complex challenge in recent years. In close collaboration with the various stakeholders in the education system, the Porto City Council has worked to create opportunities that contribute to the holistic development of children and young people, with the aim of preparing them to become "(...) informed, autonomous, responsible, tolerant and respectful citizens of the rights of others". (Convention on the Rights of the Child, UNICEF, revised edition 2019).

## 10 GUIDE TO SUPPORT THE INTEGRATION OF MIGRANTS EDUCATION

As part of the decentralization process in the field of Education, the Porto City Council has assumed responsibilities in several areas. These include the implementation of educational activities from pre-school education onward, the management of school buildings, equipment, furniture and teaching materials, ensuring the necessary conditions for the proper functioning of schools, and the recruitment and management of non-teaching staff.

Porto City  
Council



# .2

## .1 PORTO, AN EDUCATING CITY

# 1990

In 1990, the Municipality of Porto signed the **Charter of Educating Cities.**

# 1997

Since 1997 has been a member of the International Association of Educating Cities.

# 25/26

The Municipality also participates in the Portuguese Territorial Network of Educating Cities (RTPCE) and was elected, for the 2025/2026 biennium, to its Coordination Committee, alongside the municipalities of Lagoa, Lisbon, Santo Tirso, Soure, Torres Vedras and Valongo.



The Municipality of Porto also actively participates in the thematic groups "**Inclusive Cities**" and "**Playing in the Educating City**" and regularly shares the city's best educational practices in the RTPCE Bulletin.

As an Educating City, Porto collaborates with a wide range of local educational agents, as well as with cities in other countries, with the goal of learning from different realities and exchanging good practices. These interactions aim to improve learning outcomes, promote educational success, raise qualification levels, and strengthen support for school social action. In this context, the Municipality has developed a comprehensive set of policies, measures, programmes and projects, with the active participation of various institutions and public and private entities, treating Education as a shared responsibility, that requires preventive and constructive action toward common objectives.

## 2.2 PORTO, A CHILD-FRIENDLY CITY

To strengthen the relevance of children's rights, the Municipality of Porto joined the Child-Friendly City Programme and developed a Local Action Plan for 2017–2021. Promoted by UNICEF Portugal since 2015, the programme encourages the adoption of coordinated policies for childhood and adolescence, fostering collaboration across all municipal sectors and partnerships with community institutions that promote the well-being of all citizens, particularly children.

The Local Action Plan focuses on three main areas:

- a) Intersectoral Coordination
- b) Communication and Information on the Promotion and Protection of Children's Rights
- c) Active Participation of Children

**In 2019, the Municipality of Porto received official recognition as a Child-Friendly City.**



The Child-Friendly City Programme, promoted by UNICEF Portugal, **aims to support the realization of children's rights** through local policies that promote the well-being of all citizens – especially children – and the development of communities for the present and the future.



In 2016, the Municipality of Porto formally committed, together with UNICEF Portugal, to integrating children's rights into municipal policies, programmes, projects, and budgets, and the Local Action Plan for the city was validated.

Thanks to its commitment and efforts to implement children's rights through integrated policies and programmes, Porto was recognized as a Child-Friendly City in 2019. The 2025 Action Plan is currently being implemented, with a new plan expected to be presented in early 2026.



CAP. **3**

# Organization of the Education System

According to the Constitution of the Portuguese Republic, “everyone has the right to education with equal opportunities for access and academic success”, with attendance being “universal and free”, so that no child or young person can be excluded for religious, cultural, or nationality reasons. The Basic Law of the Education System (Decree–Law No. 54/2018 and Decree–Law No. 55/2018) and the Curricular Guidelines for Pre–School Education (Order No. 9180/2016, of 19 July) enshrine these inclusion and integration measures. Even undocumented children and young people have the right to enrol in Portuguese schools.

According to Decree–Law No. 46/86, the Portuguese education system is divided into three levels of education. Compulsory education in Portugal covers ages 6 to 18. To facilitate the integration of migrant children and young people, foreign qualifications can be recognized for equivalence, provided they are properly documented.

**Optional attendance cycle** from age 3 until entry into Basic Education



**Pre-School Education**

Comprising 3 sequential cycles:

- > **1st cycle** (4 years)
- > **2nd cycle** (2 years)
- > **3rd cycle** (3 years)



**Primary Education**

Educational and Training Offerings:

> **Scientific-Humanistic Courses**

(Science and Technology, Social and Economic Sciences, Languages and Humanities, and Visual Arts)

> **Specialized Artistic Courses**

(Visual and Audiovisual Arts, Dance, Music, and Theatre)



**Secondary Education**

3 years



**Professional Courses**

Learn more



**Higher Education**



Young people who finish secondary level can apply for Higher Education

It is a secondary education programme with double certification, providing both professional certification and equivalence to the secondary level.

3

## .1 WHAT EDUCATIONAL INSTITUTIONS ARE AVAILABLE IN THE CITY OF PORTO?

Porto offers a diverse range of educational programmes, from **Pre-School Education** and **Basic Education** to **Secondary and Higher Education**. The Public School Network of Porto comprises:  
(See **chapter 7, p.33**)



## .2 WHERE CAN A CHILD OR YOUNG PERSON BE ENROLLED?

To register a child or young person, the parent or guardian must access the Enrolment Portal.

If the parent or guardian is unable to complete the enrolment online, they may submit the request in person at the school where the School Cluster in their area of residence or workplace is based.

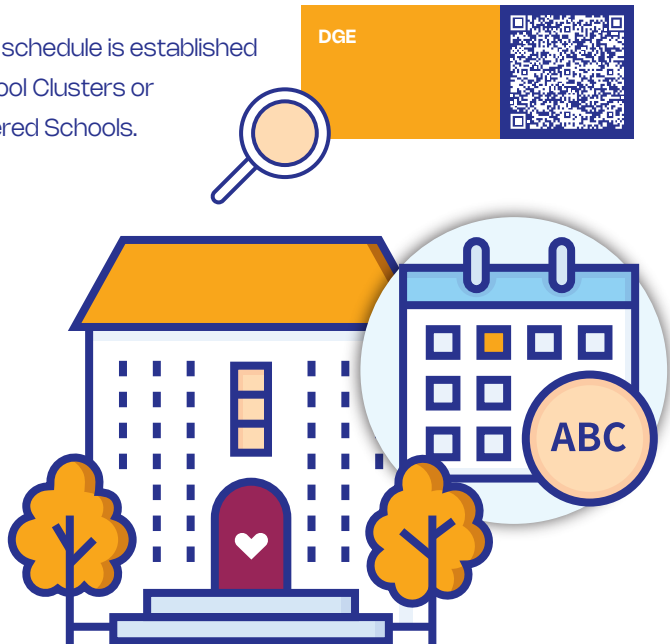


### 3 HOW IS THE SCHOOL YEAR ORGANIZED?

According to Normative Order No. 6/2018, of 12 April, the school year runs from 1 September of each year and 31 August of the following year.

The school calendar is set by the Ministry of Education, while School Clusters and Non-clustered Schools may choose either a term-based organization (three terms) or semester-based organization (two terms). In both cases, there are scheduled school breaks.

The school schedule is established by the School Clusters or Non-clustered Schools.



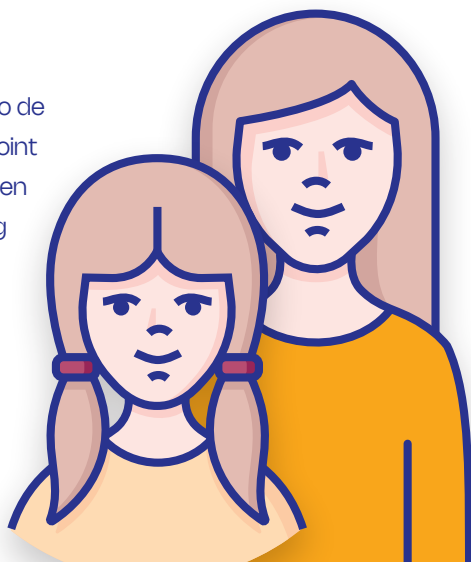
.3

#### .4 HOW IS THE PORTUGUESE LANGUAGE INTEGRATED INTO THE CURRICULUM OF MIGRANT CHILDREN OR YOUNG PEOPLE?

In accordance with Article 12 of Ordinance No. 223-A/2018 and Articles 11 and 12 of Ordinance No. 226-A/2018, of 7 August, a child or young person whose mother tongue is not Portuguese is entitled to Portuguese as a Non-Native Language (PLNM) and/or specific support measures in Basic Education (1st, 2nd and 3rd Cycles) and Secondary Education. To this end, each school **“conducts an assessment of the student’s Portuguese language skills”**.

#### .5 WHAT IS THE ROLE OF THE LEGAL GUARDIAN?

The Legal Guardian (Encarregado de Educação) serves as the main point of reference and contact between the school and the child or young person.



## 6 WHAT RESPONSES ARE AVAILABLE IN PUBLIC SCHOOLS FOR CHILDREN AND YOUNG PEOPLE WITH SPECIAL HEALTH CARE NEEDS?

### Learning Support Centres

#### (Centros de Apoio à Aprendizagem – CAA)

According to Decree-Law No. 54/2018, of July 6, "**the learning support centre is a support structure that aggregates the human and material resources, knowledge and skills of the school**", which, in collaboration with the different services of the school, aims to "**support the inclusion of children and young people in the group/class and in the routines and activities of the school (...)**".

It is the responsibility of the **Multidisciplinary Support Team for Inclusive Education (Equipa Multidisciplinar de Apoio à Educação Inclusiva – EMAEI)** to:

- › Raise awareness within the educational community about inclusive education.
- › Propose the learning support measures to be implemented.
- › Follow up, monitor, and evaluate the implementation of measures supporting learning and inclusion.
- › Advise teachers on the implementation of inclusive pedagogical practices.
- › Prepare the technical-pedagogical report referred to in Article 21 and, where applicable, the Individual Educational Program and the Individual Transition Plan (Articles 24 and 25).
- › Monitor the operation of the Learning Support Centre. (Article 12 – Decree-Law No. 54/2018).



## Reference Schools

Reference schools **"constitute a specialized educational response"** and **"integrate teachers with specialized training in special education"** across different areas, in order to ensure **"accessibility to information and the curriculum."**

(Decree-Law No. 54/2018, of 6 July)

In the Municipality of Porto, reference schools are distributed among different School Clusters, offering educational programmes designed to meet the various permanent educational needs of children and young people with limitations at different levels. The list of reference schools and their distribution can be found in **Chapter 7.3, p.42.**



CAP.  
**.4**

# What support is available for children and young people?

## .1 SCHOOL SOCIAL ACTION

The Basic Law of the Education System, under Article 30 of Decree–Law No. 46/86, of 14 October, ensures that children and young people facing greater economic vulnerability can access resources and support, promoting equity and inclusion.

**Specifically:**

"**1. School social action services** are provided within the scope of Pre–School and School Education, implemented through positive discrimination criteria aimed at the **social and educational compensation** of the most economically disadvantaged students.



## 22 GUIDE TO SUPPORT THE INTEGRATION OF MIGRANTS

### WHAT SUPPORT IS AVAILABLE FOR CHILDREN AND YOUNG PEOPLE?



**2. School social action services** encompass a diverse range of measures, including **support for meals, canteen services, transport, accommodation, textbooks** and **school supplies**, as well as the **provision of scholarships"**

You can apply for Family Allowance in Social Security Direct **or** at the Social Security services.

Social Security Direct



In accordance with the provisions of **Order No. 8452-A/2015**, as amended, children and students who are conditionally enrolled may, through administrative approval by the School Cluster benefit from the same access conditions to School Social Action.

#### **Specifically:**

#### **Article 12.º**

#### **Exceptional situations**

- "1. Students from households residing in Portugal without legal status, who are conditionally enrolled, are also entitled to benefit from the support

- > The price of school meals varies according to the Family Allowance Tier of the household. **Meals are free** for children and young people who qualify for **Tier A (Escalaõ A)**
- > For those in **Tier B (Escalaõ B)**, the meal costs **€0.73**
- > And for **all others** without a tier, the cost is **€1.46**.



Children and young people with **Special Health Needs** always receive **free meals**.

provided in this Order, through the application of the provisions in Annex III, provided that, through pay slips, they demonstrate that they meet the conditions to be included in Family Allowance Tiers 1 or 2. (...)

7. Children and young people included in the refugee contingent also benefit from the support provided in this Order, Tier A (Escalão A), requiring only, for the purpose of eligibility, the submission of the corresponding request to the School Cluster / Non-clustered Schools."



In accordance with the measures provided in the current legislation, the Porto City Council, in order to support families, promotes academic success, and foster greater equality of opportunity, assumes the following:

- > In **Pre-School Education** and **1st and 2nd years** of the **1st cycle of Basic Education**, support is provided for children and students benefiting from **Tier A (Escalão A)**, consisting of **€20 for school supplies and €20 for study trips**; for students attending the **3rd and 4th years**, support consists of €25.80 for school supplies and €20 for study trips.

## 24 GUIDE TO SUPPORT THE INTEGRATION OF MIGRANTS

### WHAT SUPPORT IS AVAILABLE FOR CHILDREN AND YOUNG PEOPLE?



- > For children and students attending **Pre-School Education and the 1st cycle** benefiting from **Tier B (Escalaão B)**, support amounts to **€18.50 for school supplies and €10 for study trips**.
  
- > **Daily provision of school snacks for all children and young people** attending educational establishments, from kindergarten to Basic Education.
  
- > The Municipality maintains the **"Escola Solidária" (Solidarity School)** initiative during all school breaks (Christmas, Easter, Carnival, Summer, and the beginning of the school year in September), providing the following food support:
  - Lunch for all children and young people aged 3 to 18 years (from kindergarten to Secondary Education), provided it is requested by the Legal Guardian.
  - Meals and snacks for children in kindergarten and the 1st cycle of Basic Education who need this support, which can be extended to siblings, aged 3 to 10 years, even if they do not attend a public school in Porto, during school breaks.
  - Meals can be consumed in school canteens, but may also be provided in takeaway form, allowing children to have the meal with their family.

CAP.  
**.5**

# Programmes and Projects

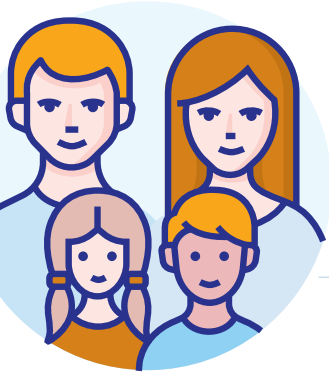


The Porto City Council, within the scope of its responsibilities, develops a range of programmes, projects, initiatives, and activities across all education levels, in cooperation with School Clusters and Non-clustered Schools, aimed at promoting socio-educational actions and the exchange of educational experiences. To this end, several protocols are established with various institutions in the city, encouraging the active participation of different social stakeholders.

In line with its commitment to **Inclusive Education**, the Porto City Council provides children and young people enrolled in specialized educational programmes with an adapted offer, which includes **Adapted Playful Expressions, Music Therapy, Cynotherapy** and **Hydrotherapy**, developed according to the individual plan of each School Cluster.

## 26 GUIDE TO SUPPORT THE INTEGRATION OF MIGRANTS PROGRAMMES AND PROJECTS

EDUCATIONAL PROGRAMMES AND PROJECTS	 DESCRIPTION	 TARGET AUDIENCE
<p><b>Porto Family Support Service (Porto de Apoio à Família)</b></p>	<p>Programme designed to enhance Animation and Family Support activities, taking place before and after the official teaching hours, as well as during school breaks (Christmas, Carnival, Easter, and Summer, including August).</p>	<p>The activities are aimed at all children attending public kindergartens in Porto.</p>
<b>ACTIVITIES AND PROJECTS</b>		
<p>Within the scope of this programme, the following projects are implemented:</p> <ul style="list-style-type: none"> <li>➤ <b>Introduction to Music:</b> aimed at promoting curricular enrichment in the field of music.</li> <li>➤ <b>Introduction to Judo:</b> based on adherence to the principles of judo as a formative sport, ensuring a balance between the development of mind and body.</li> <li>➤ <b>Physical-Motor Expression:</b> aimed at promoting the development of multifaceted physical abilities, namely coordination, balance, and body awareness, as well as socio-affective skills.</li> </ul>		
<p><b>Porto Activity Centre (Porto de Atividades)</b></p>	<p>The Porto de Atividades Programme, created in 2006, comprises a set of free Curricular Enrichment Activities (AEC), ensuring coverage of non-teaching time.</p>	<p>The AEC are aimed at all children in the 1st Cycle of Basic Education in public schools in Porto.</p>
<b>ACTIVITIES AND PROJECTS</b>		
<p>The following activities are provided:</p> <ul style="list-style-type: none"> <li>➤ <b>Physical and Sports Activities</b></li> <li>➤ <b>Playful and Expressive Activities (Visual Arts, Drama, and Music)</b></li> <li>➤ <b>Animation Activities and Study Support</b></li> </ul> <p>All children in the 4th year of schooling who attend the <b>"Vamos Nadar" (Let's Swim) programme</b> are provided with a swimming kit, consisting of a bag, towel, flip-flops, goggles, and a swim cap.</p>		
<p><b>Porto Children's Program (Porto das Crianças)</b></p>	<p>Porto Children's Programme was developed in 1995 and reinforces curricular areas such as artistic and scientific education, as well as civic and citizenship training.</p>	<p>Porto Children's Programme is aimed at children in pre-school education and the 1st cycle of Basic Education in public schools in Porto.</p>
<b>ACTIVITIES AND PROJECTS</b>		
<p>Projects promoted under the Porto Children's Program:</p> <ul style="list-style-type: none"> <li>➤ <b>Language and Communication:</b></li> <li>➤ <b>Emotional Intelligence:</b> based on the Mindfulness technique, it aims to promote emotional and social skills – the ability to recognize, understand and manage one's own emotions and those of others.</li> </ul>		



Porto Children's Program  
(Porto das Crianças)

- > **Philosophy with Children:** promotes philosophical thinking, helping the youngest to reflect on the reality that surrounds them, to position themselves in situations, justifying themselves, and debating with others, for full citizenship.
- > **Yoga:** promotion of basic skills, such as coordination, autonomy, responsibility, empathy, in the relationship with others.

**Arts:**

- > Animation Cinema, Dance, Sound Workshop, Theatre, Painting, Sculpture

**Science and Technology:**

- > **Open Laboratory:** activities focused on themes related to environmental studies and natural sciences, addressing human beings and their relationship with the surrounding environment, promoting scientific reasoning, a sense of responsibility, and cooperative work.
- > **Experimental Science Activities** with researchers from i3S – Institute for Research and Innovation in Health.
- > **Robotics:** a playful activity in the areas of programming, electronics, and computer science, which develops logical and abstract reasoning and promotes teamwork and collaborative learning.

Porto of the Future was created in 2007 with the aim of encouraging the participation of civil society in the life of schools and training students and teachers to face current challenges.

Porto de Futuro is aimed at Elementary and Secondary Education students from public schools in Porto.

**ACTIVITIES AND PROJECTS**

The following projects are developed under this program:

- > **In2Excellence:** a management training programme aimed at school management bodies.
- > **Education for Citizenship:** training programs in entrepreneurship, citizenship, and financial literacy.
- > **Braço Direito (Right Hand):** a project that brings young people closer to the world of work by providing the experience of one day in a business environment, accompanied by an employee.
- > **Innovation Challenge:** promotes young people's entrepreneurial capacity by fostering the development of interpersonal and initiative-related skills, through teamwork and the ability to solve real problems within short deadlines.
- > **A Empresa (The Company):** involves the creation and management of a mini-company over one school year by teams of students, aimed at developing an original idea for a product or service.
- > **Universidade Júnior (Junior University):** a University of Porto programme introducing basic and secondary education students to the university environment, allowing them to explore different fields of knowledge through short courses based on experiential learning and thematic workshops.
- > **Classes without Borders:** delivery of classes by international students from the University of Porto to promote interculturality and introduce other languages, cultures, and worldviews.
- > **Mathematics Beyond the Classroom:** delivery of mathematics lessons outside the school environment, highlighting their application to everyday life.

Porto of the Future  
(Porto do Futuro)

## 28 GUIDE TO SUPPORT THE INTEGRATION OF MIGRANTS PROGRAMMES AND PROJECTS

<p><b>Porto of the Future (Porto do Futuro)</b></p>	<ul style="list-style-type: none"> <li>&gt; <b>Student Volunteering:</b> a project providing pedagogical support and personal development for basic education students, delivered by higher education students, with the aim of combating school failure and early school leaving.</li> <li>&gt; <b>Learning to Be Healthy:</b> an awareness-raising project on oral hygiene aimed at strengthening health promotion and oral disease prevention actions in educational environments.</li> <li>&gt; <b>For Your Health:</b> an oral health promotion project that ensures the provision of oral healthcare services, including diagnosis and treatment, to students in the 1st cycle of Basic Education.</li> </ul>	
<p><b>Porto of Knowledge (Porto de Conhecimento)</b></p>	<p>Programme for scientific literacy and encouragement of higher education studies and research careers, created in 2008.</p>	<p>Porto of Knowledge is aimed at Elementary and Secondary Education students from public schools in Porto.</p>
<p><b>ACTIVITIES AND PROJECTS</b></p>		
	<p>Porto of Knowledge includes the following projects:</p> <ul style="list-style-type: none"> <li>&gt; <b>SEI – Society, School and Research:</b> project to promote knowledge and scientific literacy that involves higher education institutions and research centres.</li> <li>&gt; <b>Scholarships:</b> a measure to support the continuation of studies, sponsored by private higher education institutions in partnership with the Municipality of Porto.</li> </ul>	
<p><b>Porto of Words (Porto das Palavras)</b></p>	<p>The Porto of Words Programme main objective is to support the development of language, speaking, reading, and writing skills through the empowerment of the educational community and the creation and optimization of educational resources.</p>	<p>Porto of Words is aimed at all children in pre-school education and 1st cycle of Basic Education and young people attending Education and Training Courses (CEF) and Integrated Education and Training Programmes (PIEF).</p>
<p><b>ACTIVITIES AND PROJECTS</b></p>		
	<p>Porto of Words includes the following projects:</p> <ul style="list-style-type: none"> <li>&gt; <b>Words in Sounds<sup>1</sup>:</b> initiative aimed at promoting language and speech skills at the base of reading and writing learning mechanisms, among all children of EPE and students in the 1st cycle of Basic Education.</li> <li>&gt; <b>Words of Meeting<sup>2</sup>:</b> development, application and evaluation of a playful-pedagogical kit aimed at migrant children in pre-school education, which contributes to the promotion of their school integration, the learning of the Portuguese language and education for sociocultural diversity.</li> <li>&gt; <b>Words on Stage<sup>3</sup>:</b> aims to raise the language, speaking, reading and writing skills of young people who attend CEF and PIEF classes, completing the activities already developed in schools through the use of the arts, especially theatre methodologies and tools.</li> <li>&gt; <b>Roadmap through School Libraries<sup>4</sup>:</b> project that aims to contribute to the promotion of literacy of children who attend EPE and 1st cycle of Basic Education, facilitating the transformation of school libraries into dynamic and innovative environments, which foster creativity and discovery, and which cultivate reading habits.</li> </ul>	

<sup>1</sup> Project funded by NORTE2030 – application for call NORTE2030–2024–5.

<sup>2</sup> Portuguese Recovery and Resilience Plan (PRR) funded project – application for notice no. 04/C03–I06.03/2023.

<sup>3</sup> Portuguese Recovery and Resilience Plan (PRR) funded project – application for notice no. 04/C03–I06.03/2023.

<sup>4</sup> Project funded by NORTE2030 – application for call NORTE2030–2024–5.



<p><b>Financial Education</b></p>	<p>Financial literacy projects that develop the concepts and contents of the Financial Education Framework.</p>	<p>The financial education projects are aimed at Elementary, Secondary and Professional School students from public schools in Porto.</p>
<p><b>ACTIVITIES AND PROJECTS</b></p>		
<p><b>Share Program</b></p>	<p>Programme for the prevention and promotion of the rights of children and young people, developed in partnership with institutions operating in this area of activity and in collaboration with the Commissions for the Protection of Children and Young People in Porto.</p>	<p>The programme is aimed at Elementary and Secondary school students from public schools in Porto.</p>
<p><b>ACTIVITIES AND PROJECTS</b></p>		
<p><b>Casa São Roque – Art Centre</b></p>	<p>Training projects in the arts aimed at fostering individual and collective artistic reflection and expression among students.</p>	<p>The projects are aimed at Elementary and Secondary school students from public schools in Porto.</p>
<p><b>ACTIVITIES AND PROJECTS</b></p>		
<p>The following projects are developed:</p> <ul style="list-style-type: none"> <li>➤ <b>CASA:</b> a project that places Casa São Roque at the centre of the relationship between everyday life, the arts, history, and architecture.</li> <li>➤ <b>CAMELLIAS:</b> artistic project focused on the centennial and heritage-listed camellias existing in the garden of Casa São Roque.</li> <li>➤ <b>Artistic residency at A CASA:</b> space for individual and collective reflection and artistic expression.</li> </ul>		

### 30 GUIDE TO SUPPORT THE INTEGRATION OF MIGRANTS PROGRAMMES AND PROJECTS



<p><b>Mosaic</b></p>	<p>Cultural Show of the Artistic and Professional Schools of the City.</p>	<p>The project is aimed at artistic and professional education students from schools in Porto.</p>
<p><b>ACTIVITIES AND PROJECTS</b></p>		
<p>Collaborative cultural show held annually to celebrate the unity of the city's schools, serving as a laboratory for learning, citizenship, and social transformation.</p>		
<p><b>Light, Shadow, Action</b></p>	<p>Training project in the arts, using shadow theatre, in a close relationship with the history of the Porto Ageas Coliseum.</p>	<p>The project is aimed at students in the 1st cycle of public schools in Porto.</p>
<p><b>ACTIVITIES AND PROJECTS</b></p>		
<p>The project includes:</p> <ul style="list-style-type: none"> <li>&gt; <b>Shadow theatre workshop</b> at school with the offer of a pedagogical kit to each participating student.</li> <li>&gt; <b>Performative activity</b> at the Porto Ageas Coliseum with all classes participating in the workshops.</li> </ul>		
<p><b>School Merit Awards</b></p>	<p>Student recognition and appreciation awards.</p>	<p>The prizes are awarded to Elementary, Secondary and Professional Education students from public schools in Porto and Professional schools.</p>
<p><b>ACTIVITIES AND PROJECTS</b></p>		
<p>The following prizes are awarded annually:</p> <ul style="list-style-type: none"> <li>&gt; <b>Towards Excellence:</b> school merit award to the best students in each cycle of Elementary, Secondary and Professional Education.</li> <li>&gt; <b>Revelation:</b> recognition of students who reveal great abilities or exemplary attitudes to overcome difficulties.</li> </ul>		
<p><b>Ciência Viva School</b></p>	<p>Educational project aimed at promoting the experimental teaching of sciences and the development of scientific and technological culture, established through a partnership between the University of Porto and the Municipality. In this project, classes of students exchange their classroom for the Living Science Centres (Porto Planetarium or Biodiversity Gallery) for one week.</p>	<p>The project is aimed at students in the 1st cycle of public schools in Porto.</p>

More information

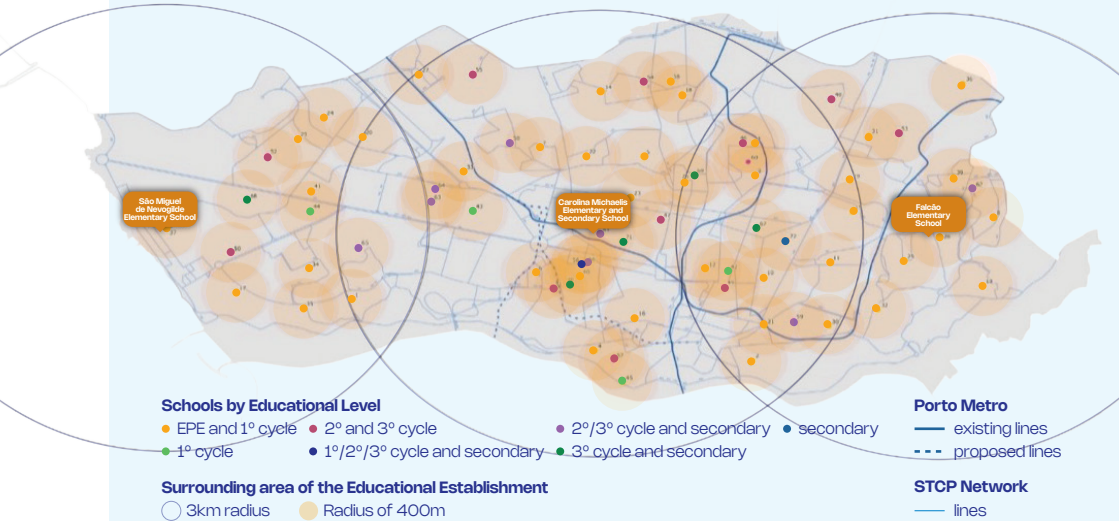


CAP. 6

# How can children and young people get to school?

## 1.1 PUBLIC TRANSPORT NETWORK OF THE MUNICIPALITY OF PORTO

Public Education Establishments – Municipality of Porto



**PORTO CITY COUNCIL**  
 MUNICIPAL DIRECTORATE OF URBAN DEVELOPMENT  
 MUNICIPAL DEPARTMENT OF URBAN PLANNING  
 MUNICIPAL DIVISION OF GEOGRAPHIC INFORMATION

**.6**

**.2 INTERMODAL TRANSPORT TICKET  
– FREE ANDANTE**

Within the scope of the Incentive Programme for Collective Public Passenger Transport – Incentiva+TP, the Municipality of Porto has a free intermodal transport ticket for all children and young students aged 4 to 23, valid for the entire public passenger transport network in the City.



**Andante**

**Customer Support:**

+351 226 158 151

**Blue Line:**

+351 226 158 158 // 808 200 166

[cliente@andante.pt](mailto:cliente@andante.pt)




CAP. 7

# Porto Schools Network

## .1 SCHOOL CLUSTERS

What schools are available in the City of Porto?



SCHOOL CLUSTERS	SCHOOL	CONTACTS
<b>Alexandre Herculano School Cluster</b> 	<b>Alexandre Herculano Elementary and Secondary School</b>	Avenida Camilo // 4300-096 Porto +351 225 371 838 // <a href="mailto:secretaria@esah.org">secretaria@esah.org</a>
	<b>Alegria Elementary School</b>	Praça da Alegria, S/N // 4000-027 Porto +351 936 791 056 // <a href="mailto:escola.alegriaeah@gmail.com">escola.alegriaeah@gmail.com</a>
	<b>Campo 24 de Agosto Elementary School</b>	Campo 24 de Agosto, n.º 312 // 4300-096 Porto +351 936 791 053 // <a href="mailto:eb.campo24agosto@esah.org">eb.campo24agosto@esah.org</a>
	<b>Flores Elementary School</b>	Praça Doutor Pedro Teotónio Pereira, n.º 185 4300-401 Porto +351 936 790 407 // <a href="mailto:flores.eeah@gmail.com">flores.eeah@gmail.com</a>
<b>António Nobre School Cluster</b> 	<b>Lomba Elementary School</b>	R. Frei Heitor Pinto, n.º 100 // 4300-431 Porto +351 936 790 403 // <a href="mailto:eb.lomba@esah.org">eb.lomba@esah.org</a>
	<b>António Nobre Secondary School</b>	R. Aval de Cima, n.º 128 // 4200-105 Porto +351 225 096 771 // <a href="mailto:secretaria@ae-anobre.pt">secretaria@ae-anobre.pt</a>
	<b>Nicolau Nasoni Elementary School</b>	R. Sto. António de Contumil, S/N // 4350-285 Porto +351 225 507 902 // <a href="mailto:coord.nasoni@ae-anobre.pt">coord.nasoni@ae-anobre.pt</a>
	<b>Areosa Elementary School</b>	R. Prof. António Cruz, n.º 278-28 // 4200-001 Porto +351 225 420 540 // <a href="mailto:coord.areosa@ae-anobre.pt">coord.areosa@ae-anobre.pt</a>
	<b>Antas Elementary School</b>	R. da Renascença Portuguesa, n.º 227 4350-110 Porto +351 225 088 726 // <a href="mailto:coord.antas@ae-anobre.pt">coord.antas@ae-anobre.pt</a>

## 34 GUIDE TO SUPPORT THE INTEGRATION OF MIGRANTS

### PORTO SCHOOLS NETWORK



SCHOOL CLUSTERS	SCHOOL	CONTACTS
<b>António Nobre School Cluster</b> 	<b>Montebello Elementary School</b>	R. da Alcântara, n.º 341 // 4350-022 Porto +351 225 020 208 <a href="mailto:coord.montebello@ae-anobre.pt">coord.montebello@ae-anobre.pt</a>
	<b>Monte Aventino Elementary School</b>	R. Rodrigo Alvares, S/N // 4350-277 Porto +351 225 020 897 <a href="mailto:coord.monteaventino@ae-anobre.pt">coord.monteaventino@ae-anobre.pt</a>
	<b>São João de Deus Elementary School</b>	R. 2, B. S. João de Deus // 4350-146 Porto +351 225 407 254 // <a href="mailto:coord.sjd@ae-anobre.pt">coord.sjd@ae-anobre.pt</a>
<b>Aurélia de Sousa School Cluster</b> 	<b>Aurélia de Sousa Secondary School</b>	R. Aurélia de Sousa // 4000-099 Porto +351 225 021 773 <a href="mailto:secretaria@ae-aureliadesousa.com">secretaria@ae-aureliadesousa.com</a>
	<b>Augusto Gil Elementary School</b>	R. da Alegria, n.º 351 // 4000-044 Porto +351 222 009 671 <a href="mailto:coordenacaogil@ae-aureliadesousa.com">coordenacaogil@ae-aureliadesousa.com</a>
	<b>Fernão Magalhães Elementary School</b>	R. Dom Agostinho de Jesus e Sousa, n.º 172 4000-015 Porto +351 225 379 484 // <a href="mailto:eb1fmagalhaes@gmail.com">eb1fmagalhaes@gmail.com</a>
	<b>Fontinha Elementary School</b>	R. de Raúl Dória, n.º 89 // 4000-409 Porto +351 222 037 696 // <a href="mailto:eb1fontinha@gmail.com">eb1fontinha@gmail.com</a>
	<b>Florinhas Elementary School</b>	R. da Escola Normal, n.º 28 // 4000-199 Porto +351 225 898 492 // <a href="mailto:eb1dasflorinhas@gmail.com">eb1dasflorinhas@gmail.com</a>
<b>Carolina Michaelis School Cluster</b> 	<b>Carolina Michaelis Elementary and Secondary School</b>	R. Infanta D. Maria // 4050-350, Porto +351 226 051 110 // <a href="mailto:geral@aecarolinamichaelis.pt">geral@aecarolinamichaelis.pt</a>
	<b>Irene Lisboa Elementary School</b>	R. de Cervantes, n.º 532 // 4050-186 Porto +351 225 500 306 <a href="mailto:irenelisboa@aecarolinamichelis.pt">irenelisboa@aecarolinamichelis.pt</a>
	<b>Constituição Elementary School</b>	R. Padre Pacheco do Monte, n.º 31 // 4250-255 Porto +351 228 317 761 <a href="mailto:constituicao@aecarolinamichaelis.pt">constituicao@aecarolinamichaelis.pt</a>
	<b>Bom Pastor Elementary School</b>	R. de Arzila, n.º 149 // 4250-066 Porto +351 225 025 024 <a href="mailto:bompastor@aecarolinamichaelis.pt">bompastor@aecarolinamichaelis.pt</a>
<b>Cerco do Porto School Cluster</b>	<b>Cerco do Porto Elementary and Secondary School</b>	R. N. Sra. do Calvário // 4300 – 357 Porto +351 225 366 171 <a href="mailto:agrupamento.cerco@aecerco.pt">agrupamento.cerco@aecerco.pt</a>
	<b>Cerco Elementary School</b>	R. do Cerco // 4300-112 Porto +351 225 101 958 // +351 225 372 147 <a href="mailto:ebcerco@aecerco.pt">ebcerco@aecerco.pt</a>

<p><b>Cerco do Porto School Cluster</b></p> 	<p><b>Falcão Elementary School</b></p>	<p>R. do Falcão, n.º 708 // 4300–178 Porto +351 225 365 713 // <a href="mailto:ebfalcão@aecerco.pt">ebfalcão@aecerco.pt</a></p>
	<p><b>São Roque de Lameira Elementary School</b></p>	<p>R. de Ourique, n.º 111 // 4350–204 Porto +351 225 107 644 // <a href="mailto:ebсроque@aecerco.pt">ebсроque@aecerco.pt</a></p>
	<p><b>Nossa Senhora de Campanhã Elementary School</b></p>	<p>R. N. Sra. Campanhã // 4300–322 Porto +351 225 371 264 // <a href="mailto:ebcampanha@aecerco.pt">ebcampanha@aecerco.pt</a></p>
	<p><b>Lagarteiro Elementary School</b></p>	<p>R. do Lagarteiro, n.º 454 // 4300–252 Porto +351 225 303 238 // <a href="mailto:eblagarteiro@aecerco.pt">eblagarteiro@aecerco.pt</a></p>
	<p><b>Corujeira Elementary School</b></p>	<p>Praça da Corujeira, n.º 12 // 4300–147 Porto +351 225 370 434 // <a href="mailto:ebcorujeira@aecerco.pt">ebcorujeira@aecerco.pt</a></p>
<p><b>Clara de Resende School Cluster</b></p> 	<p><b>Clara de Resende Elementary and Secondary School</b></p>	<p>R. O Primeiro de Janeiro // 4100 – 365 Porto +351 226 064 689 // +351 932 203 406 +351 912 967 093 // +351 961 262 032 <a href="mailto:geral@clararesende.pt">geral@clararesende.pt</a></p>
	<p><b>João de Deus Elementary School</b></p>	<p>R. de João de Deus, n.º 399 // 4100–461 Porto +351 226 098 182 // <a href="mailto:joadedeus@clararesende.pt">joadedeus@clararesende.pt</a></p>
<p><b>Eugénio de Andrade School Cluster</b></p> 	<p><b>Eugénio de Andrade Elementary School</b></p>	<p>R. Augusto Lessa // 4200–098 Porto +351 225 091 008 // +351 935 091 008 <a href="mailto:direcao@agrupamento-eugenioandrade.org">direcao@agrupamento-eugenioandrade.org</a></p>
	<p><b>Augusto Lessa Elementary School</b></p>	<p>R. Augusto Lessa, n.º 402 // 4200–098 Porto +351 225 502 971 <a href="mailto:ebaugustolesa@agrupamento-eugenioandrade.org">ebaugustolesa@agrupamento-eugenioandrade.org</a></p>
	<p><b>Costa Cabral Elementary School</b></p>	<p>R. de Costa Cabral, n.º 551 // 4200–223 Porto +351 225 090 497 <a href="mailto:ebcostacabral@agrupamento-eugenioandrade.org">ebcostacabral@agrupamento-eugenioandrade.org</a></p>
	<p><b>Covelo Elementary School</b></p>	<p>R. Dr. Adriano de Paiva, n.º 265 // 4200–439 Porto +351 225 511 936 <a href="mailto:ebcovelo@agrupamento-eugenioandrade.org">ebcovelo@agrupamento-eugenioandrade.org</a></p>
<p><b>Fontes Pereira de Melo School Cluster</b></p> 	<p><b>Fontes Pereira de Melo Elementary and Secondary School</b></p>	<p>R. O Primeiro de Janeiro // 4100 – 366 Porto +351 226 008 802 // <a href="mailto:secretaria@aefontespmelo.pt">secretaria@aefontespmelo.pt</a></p>
	<p><b>Maria Lamas Elementary School</b></p>	<p>Travessa da Prelada, n.º 4 // 4260–379 Porto +351 936 538 282 // +351 228 348 620</p>
	<p><b>Castelos Elementary School</b></p>	<p>R. Castelo de Guimarães // 4250–108 Porto +351 911 141 837 // +351 911 141 820 <a href="mailto:eb1castelos@cm-porto.pt">eb1castelos@cm-porto.pt</a></p>
	<p><b>Caramila Elementary School</b></p>	<p>R. Sousa Pinto // 4250–090 Porto +351 228 320 107 // <a href="mailto:eb.caramila@aefontespmelo.pt">eb.caramila@aefontespmelo.pt</a></p>
	<p><b>Padre Américo Elementary School</b></p>	<p>R. do Padre Américo // 4200–045 Porto +351 226 066 212 // <a href="mailto:eb.p.americo@aefontespmelo.pt">eb.p.americo@aefontespmelo.pt</a></p>

## 36 GUIDE TO SUPPORT THE INTEGRATION OF MIGRANTS

### PORTO SCHOOLS NETWORK






SCHOOL CLUSTERS	SCHOOL	CONTACTS
<b>Garcia de Orta School Cluster</b> 	<b>Garcia de Orta Secondary School</b>	R. de Pinho Leal // 4150 – 620 Porto +351 226 198 340 // <a href="mailto:geral@aegarciadeorta.pt">geral@aegarciadeorta.pt</a>
	<b>Francisco Torrinha Elementary School</b>	R. S. Francisco Xavier, n.º 64 // 4150–673 Porto +351 226 180 171 // +351 932 827 815
	<b>São Miguel de Nevogilde Elementary School</b>	R. da Escola // 4150–245 Porto +351 226 184 759 // +351 936 793 208 <a href="mailto:escoladenevogilde@hotmail.com">escoladenevogilde@hotmail.com</a>
	<b>Paulo da Gama Elementary School</b>	R. de Paulo da Gama, n.º 28F // 4150–593 Porto +351 226 181 620 // +351 936 793 167 <a href="mailto:ebpaulodagama@gmail.com">ebpaulodagama@gmail.com</a>
	<b>São João da Foz Elementary School</b>	R. Escultor Henrique Moreira, n.º 75 // 4150–133 Porto +351 226 154 089 // +351 936 793 165 <a href="mailto:escoladafoz@gmail.com">escoladafoz@gmail.com</a>
<b>Infante D. Henrique School Cluster</b> 	<b>Infante D. Henrique Secondary School</b>	Largo Alexandre Sá Pinto // 4050–027 Porto +351 226 052 860 // <a href="mailto:secretaria@infante.pt">secretaria@infante.pt</a>
	<b>Gomes Teixeira Elementary School</b>	Praça da Galiza // 4150–344 Porto +351 226 002 032
	<b>Bom Sucesso Elementary School</b>	R. Barbosa Du Bocage, n.º 36 // 4150–150 Porto +351 226 001 154 <a href="mailto:escolabomsucesso.ji@infante.pt">escolabomsucesso.ji@infante.pt</a>
<b>Leonardo Coimbra School Cluster</b> 	<b>Leonardo Coimbra – Filho Elementary and Secondary School</b>	R. Pintor António Cruz // 4150–084 Porto +351 226 178 285 <a href="mailto:secretaria@aeleonardocoimbra.net">secretaria@aeleonardocoimbra.net</a>
	<b>Condominhas Elementary School</b>	Largo Póvoa de Varzim // 4150–622 Porto +351 226 171 505 // <a href="mailto:ebcondominhas@gmail.com">ebcondominhas@gmail.com</a>
	<b>Pasteleira Elementary School</b>	R. João Rodrigues Cabrilho // 4150–096 Porto +351 226 183 554 // <a href="mailto:eljipasteleira@gmail.com">eljipasteleira@gmail.com</a>
<b>Manoel de Oliveira School Cluster</b> 	<b>Manoel Oliveira Elementary School</b>	R. Robert Auzelle, n.º 134 // 4100–431 Porto +351 226 105 740 // <a href="mailto:direcao@aemanoeloliveira.pt">direcao@aemanoeloliveira.pt</a>
	<b>Fonte da Moura Elementary School</b>	R. de Macau, n.º 14 // 4100–315 Porto +351 226 184 682 <a href="mailto:coord.fontedamoura@aemanoeloliveira.pt">coord.fontedamoura@aemanoeloliveira.pt</a>
	<b>Vilarinha Elementary School</b>	R. do Douro // 4000–217 Porto +351 226 183 835 <a href="mailto:coord.vilarinha@aemanoeloliveira.pt">coord.vilarinha@aemanoeloliveira.pt</a>

	<b>Ponte Elementary School</b>	R. de Tanger, n.º 1391 // 4150-723 Porto +351 226 102 125 // <a href="mailto:coord.ponte@aemanoeloliveira.pt">coord.ponte@aemanoeloliveira.pt</a>
<b>Pêro Vaz de Caminha School Cluster</b> 	<b>Pêro Vaz de Caminha Elementary School</b>	R. da Telheira, S/N // 4250-483 Porto +351 228 327 182 // <a href="mailto:direcaoopvcaminha@gmail.com">direcaoopvcaminha@gmail.com</a>
	<b>Agra Elementary School</b>	R. Agra do Amial // 4200-022 Porto +351 938 368 842 // <a href="mailto:escoladaagra@gmail.com">escoladaagra@gmail.com</a>
	<b>Miosótis Elementary School</b>	R. dos Miosótis // 4250-286 Porto +351 228 305 560 // <a href="mailto:eb1miosotis@gmail.com">eb1miosotis@gmail.com</a>
	<b>São Tomé Elementary School</b>	R. Conde de Abranches // 4200-011 Porto +351 228 323 525 // <a href="mailto:eb1stome.porto@gmail.com">eb1stome.porto@gmail.com</a>
<b>Rodrigues de Freitas School Cluster</b> 	<b>Rodrigues de Freitas Elementary and Secondary School</b>	Praça Pedro Nunes // 4050-466 Porto +351 226 064 829 // <a href="mailto:secretaria@aerfreitas.pt">secretaria@aerfreitas.pt</a>
	<b>Miragaia Elementary School</b>	Calçada das Virtudes // 4050-628 Porto +351 223 395 350
	<b>Bandeirinha Elementary School</b>	R. da Bandeirinha, n.º 32 // 4050-088 Porto +351 226 094 949 // <a href="mailto:eb1bandeirinha@gmail.com">eb1bandeirinha@gmail.com</a>
	<b>Carlos Alberto Elementary School</b>	Praça Carlos Alberto, n.º 84 // 4050-157 Porto +351 222 050 911 // <a href="mailto:eb1carlosalberto@gmail.com">eb1carlosalberto@gmail.com</a>
	<b>Torrinha Elementary School</b>	R. da Torrinha, n.º 288 // 4050-611 Porto +351 226 005 993 // <a href="mailto:ebtorrinha@aerfreitas.pt">ebtorrinha@aerfreitas.pt</a>
	<b>São Nicolau Elementary School</b>	R. Nova de Alfândega, n.º 59 // 4050-431 Porto +351 222 088 091 // <a href="mailto:eb1s.nicolau@gmail.com">eb1s.nicolau@gmail.com</a>
<b>Viso School Cluster</b> 	<b>Viso School Cluster</b>	R. Artur Brás // 4250-528 Porto +351 228 302 897 // +351 228 302 898 +351 228 302 926 // <a href="mailto:secretaria@aavisoporto.pt">secretaria@aavisoporto.pt</a>
	<b>Elementary School No. 2 of Viso</b>	R. de Bordeaux // 4250-499 Porto +351 226 160 188 // +351 931 664 661 <a href="mailto:eb1.j.viso@aavisoporto.pt">eb1.j.viso@aavisoporto.pt</a>
	<b>Campinas Elementary School</b>	R. D. Estevão da Gama, n.º 145 // 4100-224 Porto +351 226 173 773 // +351 931 664 662 <a href="mailto:campinas@aavisoporto.pt">campinas@aavisoporto.pt</a>
	<b>Correios Elementary School</b>	R. dos Choupos - Bairro Novo de Ramalde // 4100-160 Porto +351 226 102 458 // +351 931 664 663 <a href="mailto:correios@aavisoporto.pt">correios@aavisoporto.pt</a>



**38 GUIDE TO SUPPORT THE INTEGRATION OF MIGRANTS**  
**PORTO SCHOOLS NETWORK**



NON-CLUSTERED SCHOOLS	CYCLE	CONTACTS
<p>Artistic School of the Conservatory of Music of Porto</p> 	<p><b>Specialized Artistic Music Education</b> (from 1st cycle to Secondary)</p>	<p>Praça Pedro Nunes // 4050-466 Porto            +351 222 073 250  <a href="mailto:secretaria@conservatoriodemusicadoporto.pt">secretaria@conservatoriodemusicadoporto.pt</a></p>
<p>Soares dos Reis Artistic School</p> 	<p><b>Secondary Education</b></p>	<p>R. Major David Magno, n.º 139 // 4000-191 Porto            +351 225 371 010 // +351 225 108 141            +351 938 700 171 // +351 938 700 194  <a href="mailto:secretaria@easr.pt">secretaria@easr.pt</a></p>
<p>Filipa de Vilhena Secondary School</p> 	<p><b>Secondary Education</b></p>	<p>R. do Covelo, n.º 205 // 4200-239 Porto            +351 225 072 670 // <a href="mailto:secretaria@filipa-vilhena.edu.pt">secretaria@filipa-vilhena.edu.pt</a></p>

**.7 .2 VOCATIONAL SCHOOLS**

The Municipality of Porto also has a wide range of training courses in different areas:



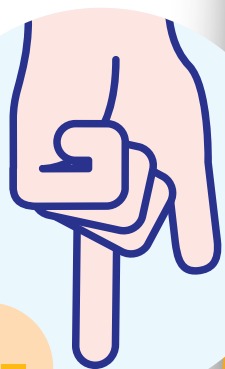
VOCATIONAL SCHOOL	CYCLE	CONTACTS
<p>Rua Costa Cabral Music Academy</p> 	<p>Pre-School, 1st, 2nd, 3rd Cycle and Secondary Education</p>	<p>R. de Costa Cabral, n.º 877 4200-225 Porto +351 225 500 901 <a href="mailto:secretaria@costacabral.com">secretaria@costacabral.com</a></p>
<p>Ballet Teatro - Professional School</p> 	<p>3rd Cycle and Secondary Education</p>	<p>R. de Passos Manuel, n.º 137 4000-385 Porto +351 222 038 971 <a href="mailto:escolaprofissional@balletteatro.pt">escolaprofissional@balletteatro.pt</a></p>
<p>Árvore Artistic and Professional School</p> 	<p>Secondary Education</p>	<p>Passeio das Virtudes, n.º 14 4050-629 Porto +351 223 394 820 <a href="mailto:secretaria@arvore.pt">secretaria@arvore.pt</a></p>
<p>Porto Fashion School – EMP</p> 	<p>Secondary Education</p>	<p>R. Engenheiro Ferreira Dias, n.º 954 Escritórios 5 4149-008 Porto +351 225 104 774 <a href="mailto:info@emp.pt">info@emp.pt</a></p>
<p>Professional School Contemporary Academy of Spectacle – ACE</p> 	<p>Secondary Education</p>	<p>R. Formosa, n.º 342/346 4000-249 Porto +351 222 089 007 <a href="mailto:escola@ace-tb.com">escola@ace-tb.com</a></p>
<p>Bento de Jesus Caraça Professional School, Porto</p> 	<p>3rd Cycle and Secondary</p>	<p>R. do Bonjardim, n.º 497, 1º 4000-126 Porto +351 222 054 713 <a href="mailto:geral.porto@epbjc.pt">geral.porto@epbjc.pt</a></p>

**40 GUIDE TO SUPPORT THE INTEGRATION OF MIGRANTS**  
**PORTO SCHOOLS NETWORK**



VOCATIONAL SCHOOL	CYCLE	CONTACTS
Professional School of Commerce of Porto 	Secondary Education	R. do Rosário, n.º 174-176 4050-521 Porto +351 222 071 530 <a href="mailto:geral@ecp.edu.pt">geral@ecp.edu.pt</a>
Professional School of Foreign Trade 	3rd Cycle and Secondary	R. Gonçalo Cristóvão, n.º 309-1º 4000-270 Porto +351 222 076 800 <a href="mailto:geral@epce.pt">geral@epce.pt</a>
Professional School of Social Economy José Moreira da Silva Academy 	Secondary Education	R. D. João IV, n.º 1000/6 4000-300 Porto (Entrada pela rampa da Rua da Alegria, n.º 598) +351 225 180 973 <a href="mailto:geral@epes.pt">geral@epes.pt</a>
Professional School of the Campanhã Youth Centre 	3rd Cycle and Secondary	R. Pinheiro de Campanhã, n.º 468 4300-415 Porto +351 225 194 150 <a href="mailto:secretaria@epcjc.net">secretaria@epcjc.net</a>
Professional School of Technology and Electronics - ESTEL 	Secondary Education	R. António Silva Marinho, n.º 117 4100-064 Porto +351 226 106 194 <a href="mailto:secretaria@estel.edu.pt">secretaria@estel.edu.pt</a>
Professional School of Psychosocial Technology of Porto 	Secondary Education	R. António Carneiro, n.º 290 4300-096 Porto (EB 2/3 Doutor Augusto César Pires Lima) +351 222 071 290 <a href="mailto:geral@eptpporto.com">geral@eptpporto.com</a>

<p>Porto School of Hospitality and Tourism</p> 	<p>Secondary Education</p>	<p>R. da Firmeza, n.º 71 4000-228 Porto +351 220 044 800 <a href="mailto:ehporto@turismodeportugal.pt">ehporto@turismodeportugal.pt</a></p>
<p>Professional School Multimedia Institute – IM</p> 	<p>Secondary Education</p>	<p>R. das Taipas, n.º 76 4050-597 Porto +351 222 084 901 <a href="mailto:im.secretaria@multimedia.pt">im.secretaria@multimedia.pt</a></p>
<p>Vocational School of Nossa Senhora do Perpétuo Socorro</p> 	<p>Secondary Education</p>	<p>R. de Costa Cabral, n.º 120 4200-208 Porto +351 225 095 043 <a href="mailto:secretariageral@perpetuo.pt">secretariageral@perpetuo.pt</a></p>
<p>Profitecla Vocational School</p> 	<p>3rd Cycle and Secondary</p>	<p>Largo Mompilher, n.º 22 4050-392 Porto +351 222 063 000 +351 935 309 851 <a href="mailto:porto@profitecla.pt">porto@profitecla.pt</a></p>
<p>Externato de "Santa Clara"</p> 	<p>3rd Cycle and Secondary</p>	<p><b>Polo 1</b> R. D. João IV, n.º 99 4000-301 Porto +351 225 365 812 <b>Polo 2</b> R. de Santo Ildefonso, n.º 422 4000-466 Porto +351 224 930 504 <a href="mailto:geral@extsantaclara.com">geral@extsantaclara.com</a></p>
<p>IPTA – Professional Institute of Advanced Technologies</p> 	<p>Secondary Education</p>	<p>R. de Silva Tapada, n.º 115 4200-501 Porto +351 225 193 221 +351 926 331 307 <a href="mailto:secretaria@ipta.pt">secretaria@ipta.pt</a></p>
<p>Raul Dória – Professional School of Commerce, Office and Services of Porto</p> 	<p>Secondary Education</p>	<p>Praça da República, n.º 93 – A 4050 – 497 Porto +351 222 074 200 <a href="mailto:geral@rauldoria.pt">geral@rauldoria.pt</a></p>



.7

### .3 REFERENCE SCHOOLS

**// What are the reference schools that exist in the City of Porto? //**

SCHOOL CLUSTERS	SCHOOL	CYCLE	EDUCATIONAL OFFERS
Alexandre Herculano	Alexandre Herculano Elementary and Secondary School	2nd, 3rd Cycle and Secondary	Multi-disability Bilingual education of students with hearing impairment
	Campo 24 de agosto Elementary School	1st Cycle	Autism Spectrum Disorders
António Nobre	António Nobre Elementary and Secondary School	2nd, 3rd Cycle and Secondary	Multi-disability
	São João de Deus Elementary School	1st Cycle	Multi-disability Autism Spectrum Disorders
Aurélia de Sousa	Aurélia de Sousa Elementary and Secondary School	2nd, 3rd Cycle and Secondary	Multi-disability
	Augusto Gil Elementary School	2nd, 3rd Cycle	Multi-disability
	Fernão Magalhães Elementary School	1st Cycle	Multi-disability
Cercos do Porto	Cercos Elementary and Secondary School	2nd, 3rd Cycle and Secondary	Multi-disability Autism Spectrum Disorders
	Falcão Elementary School	1st Cycle	Multi-disability Autism Spectrum Disorders
Eugénio de Andrade	Eugénio de Andrade Elementary School	2nd, 3rd Cycle	Multi-disability Autism Spectrum Disorders Bilingual education of students with hearing impairment

Infante D. Henrique	Infante D. Henrique Elementary and Secondary School	3rd Cycle and Secondary	Autism Spectrum Disorders
	Gomes Teixeira Elementary School	2nd, 3rd Cycle	
	Bom Sucesso Elementary School	1st Cycle	
Pêro Vaz de Caminha	Pêro Vaz de Caminha Elementary School	2nd, 3rd Cycle	Multi-disability
	São Tomé Elementary School	1st Cycle	
Rodrigues de Freitas	Rodrigues de Freitas Elementary and Secondary School	2nd, 3rd Cycle and Secondary	Multi-disability
	Torrinha Elementary School	1st Cycle	
Viso	Campinas Elementary School	1st Cycle	Multi-disability

## CAP. 8

# Supporting Legislation

- › Constitution of the Portuguese Republic, Law No. 1/2005, of 12 August
- › Convention on the Rights of the Child, UNICEF, revised edition 2019
- › Decree-Law No. 54/2018, of 6 July
- › Decree-Law No. 55/2018, of 6 July
- › Order No. 4506-A/2023, of 13 April
- › Order No. 9180/2016, of 19 July
- › Normative Order No. 6/2018, of 12 April
- › Student Statute and School Ethics – Law No. 51/2012
- › Basic Law of the Education System, Law No. 46/86, of 14 October
- › Legal Regime of Local Authorities – RJAL – Law No. 75/2013, of 12 September
- › Ordinance No. 223-A/2018, of 3 August
- › Ordinance No. 226-A/2018, of 7 August

# Contacts

Some contacts that may be useful.

**Direção Municipal da Educação**  
**(Municipal Directorate of Education)**  
Rua O Comércio do Porto, n.º 55-1º  
4050-210 Porto  
+351 222 061 700  
[dme@cm-porto.pt](mailto:dme@cm-porto.pt)

**Bonfim Parish Council**  
Campo 24 de Agosto, n.º 294  
4300-506 Porto  
+351 225 194 500  
[geral@jfbonfim.pt](mailto:geral@jfbonfim.pt)  
**Monday to Friday:** 09h00 - 17h00

**Citizen's Office**  
Praça General Humberto Delgado, n.º  
266  
4000-286, Porto  
**Opening Hours:**  
Monday to Friday: 9h00 - 17h00  
**Citizen Portal:**  
[portaldomunicipe@cm-porto.pt](mailto:portaldomunicipe@cm-porto.pt)  
<https://portaldomunicipe.cm-porto.pt/pt/--/gabinete-do-municipe>

**Commissions for the Protection of Children and Young People (CPCJ)**  
**CPCJ Porto Central**  
(Parishes of Paranhos and Ramalde)  
Rua Delfim Maia, n.º 73  
4200-455 Porto  
+351 225 574 610  
[cpcj.portocentral@cnpdpcj.pt](mailto:cpcj.portocentral@cnpdpcj.pt)

**Contact Centre of the National Health Service - SNS 24**

+351 808 242 424  
You should call the SNS 24 Line in the event of a non-emergent health problem.

**CPCJ Porto Ocidental**

(Union of Parishes of Aldoar, Foz do Douro and Nevogilde and Union of Parishes of Lordelo do Ouro and Massarelos)  
Rua dos Manjericos, n.º 45  
4000-800 Porto  
+351 226 198 080  
[cpcj.portoocidental@cnpdpcj.pt](mailto:cpcj.portoocidental@cnpdpcj.pt)

**CPCJ Porto Oriental**

(Parishes of Bonfim and Campanhã)  
Rua Delfim Maia, n.º 73  
4200-455 Porto  
+351 225 191 620  
[cpcjoriental@cm-porto.pt](mailto:cpcjoriental@cm-porto.pt)

**Jesuit Refugee Service**

Rua Rogério de Moura, Lote 59  
1750-342 Lisboa  
+351 217 552 790  
+351 937 541 620 (does not receive SMS)  
[jrsportugal@jrs.net](mailto:jrsportugal@jrs.net)

**Migrant Support Line**

+351 808 257 257  
+351 218 106 191  
**Opening Hours:** 9h00 - 19h00



### **Municipal Police**

Rua Júlio Couto, n.º 13  
4150-734 Porto  
+351 226 198 260  
[policiamunicipal@cm-porto.pt](mailto:policiamunicipal@cm-porto.pt)

#### **Opening Hours:**

Monday to Friday: 9h00 – 12h30  
14h00 – 17h30

### **National Emergency Number**

**112**

### **National Social Emergency Number**

**144**

### **National Support Centre for the Integration of Migrants (CNAIM) – North**

Avenida de França, n.º 316  
4050-276 Porto  
Edifício Capitólio  
+351 222 073 810  
[informacoes@acm.gov.pt](mailto:informacoes@acm.gov.pt)

#### **Opening Hours:**

Monday to Friday: 8h00 – 17h00

### **Paranhos Parish Council**

Rua Álvaro Castelões, n.º 811  
4200-047 Porto  
+351 225 020 046  
[geral@jfparanhos.pt](mailto:geral@jfparanhos.pt)

**Monday to Friday:** 9h00 – 12h45  
14h00 – 16h45

### **Parish Council of Campanhã**

Praça Corujeira, n.º 202  
4300-144 Porto  
+351 225 898 590  
[geral@campanha.net](mailto:geral@campanha.net)

**Monday to Friday:** 9h00 – 12h30  
14h00 – 17h30

### **Parish Council of Ramalde**

Rua Igreja de Ramalde, n.º 76-92  
4100-280 Porto  
+351 226 165 690 // 968 493 479

#### **Dedicated line:**

+351 800 244 255  
[geral@jf-ramalde.pt](mailto:geral@jf-ramalde.pt)

**Monday to Friday:** 9h00 – 13h00  
14h00 – 17h00

### **Porto Line.**

+351 220 100 220  
**Monday to Friday:** 9h00 – 19h00

### **São Cirilo Community Centre**

Rua Barão de Forrester, n.º 968  
4050-272 Porto  
+351 228 348 460  
[geral@saoCirilo.pt](mailto:geral@saoCirilo.pt)

### **Service space in Porto**

Rua da Fábrica Social, n.º 17  
4000-121 Porto  
**Opening Hours:**  
Monday to Friday: 9h30 – 13h00

## 46 GUIDE TO SUPPORT THE INTEGRATION OF MIGRANTS

### CONTACTS

#### Social Security Institute, IP – Porto District Centre

Rua de António Patrício, n.º 262  
4199-001 Porto  
+351 300 520 100

**Opening Hours:** 9h00 – 16h00

[www.seg-social.pt](http://www.seg-social.pt)

#### Social Security Line

+351 210 545 400 // 300 502 502

**Monday to Friday:** 9h00 – 18h00

#### Telephone Translation Service

(This service allows telephone conferencing between the entity /user, a translator and the immigrant.)

+351 808 257 257

+351 218 106 191

**Opening Hours:**

Monday to Friday: 9h00 – 20h00

Saturday: 9h00 – 17h00

#### Union of Parishes of Aldoar, Foz do Douro and Nevogilde

Rua de Vilarinha, n.º 1090

4100-513 Porto

+351 226 198 270

[geral@uf-aldoarfoznevogilde.pt](mailto:geral@uf-aldoarfoznevogilde.pt)

**Monday to Friday:** 9h00 – 13h00

14h00 – 17h00

#### Union of Parishes of Cedofeita, Santo Ildefonso, Sé, Miragaia, São Nicolau and Vitória

Rua de Oliveira Monteiro, n.º 385  
4050-443 Porto

+351 226 052 740

[geral@uf-centrohistoricodeporto.pt](mailto:geral@uf-centrohistoricodeporto.pt)

**Monday to Friday:** 9h00 – 17h00

#### Union of Parishes of Lordelo do Ouro and Massarelos

Rua de Serralves, n.º 10

4150-701 Porto

+351 226 166 910 // 914 394 461

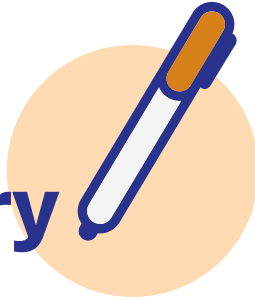
[geral@uf-lordelouromassarelos.pt](mailto:geral@uf-lordelouromassarelos.pt)

**Monday to Friday:** 9h00 – 13h00

14h00 – 17h00



# Glossary



**Andante – Intermodal Transport Ticket** – Transport pass that allows the use of metro, bus, and urban train in the Metropolitan Area of Porto with the same card.

**Basic Education** – Compulsory and free education for all children, usually from 6 to 15 years old. It is divided into three cycles: 1st Cycle: 1st to 4th year (4 years); 2nd Cycle: 5th and 6th years (2 years); 3rd Cycle: 7th to 9th year (3 years).

**Basic Law of the Education System** – Law that organizes the entire education system in Portugal, explaining the levels of education, compulsory education, and the rights of students.

**Citizen's Office** – Integrated multichannel customer service (online, telephone, and face-to-face), created to meet the needs and expectations of the citizens of Porto and all individuals who, for personal or professional reasons, interact with the Municipality of Porto.

**Constitution of the Portuguese Republic** – Fundamental law establishing the organization of the State and enshrining citizens' fundamental rights, such as the right to education, health, and equality.

**Curriculum** – Set of subjects and content that students learn in each year and at each level of education.

**Higher Education** – Post-secondary or vocational education, carried out in universities and polytechnic institutes, awarding bachelor's, master's, and doctoral degrees.

**Jesuit Refugee Service** – An organization whose mission is to “accompany, serve, and defend refugees, forcibly displaced people, and all migrants in situations of particular vulnerability.”

**Learning Support Centres (CAA – Centros de Apoio à Aprendizagem)** – Spaces within schools that support students with learning difficulties or with special health care needs, through individual or small group monitoring.

## 48 GUIDE TO SUPPORT THE INTEGRATION OF MIGRANTS

### GLOSSARY

**Ministry of Education** – Government entity responsible for educational policies, public schools, and the organization of the education system in Portugal.

**Municipal and Intercultural Mediators of Porto** – Professionals who help migrant families integrate into schools and public services, facilitating communication, especially when there are difficulties with the Portuguese language or system.

**Parent/Legal Guardian** – Adult responsible for the child or young person in the school context (father, mother, or legal guardian). They receive information, participate in meetings, and authorize school decisions.

**Preschool Education** – First stage of education for children from 3 to 5 years old. It is not mandatory but is very important for development and preparation for Basic Education.

**Professional Education** – Secondary education pathway focused on practice, offering dual certification (school and professional). Suitable for young people after the 9th grade, facilitating entry into the job market.

**Porto Public Transport Network** – The city's public transport system, including buses, metro, and city trains.

**Public School Network** – Set of state-funded schools, free for families. It differs from private education, which is paid for and managed by private entities.

**Reference Schools** – Schools providing specialized educational responses for students with special health care needs specific educational needs. They have teachers trained in special education and adapted resources to ensure access to information and the curriculum.

**School Enrolment** – Process of registering a child or young person in a school. Without enrolment, attending classes is not possible.

**School Clusters** – Set of schools in the same area that work together under a single management, from pre-school to secondary education, facilitating the monitoring of students' school careers.

**School Social Action** – State support that helps students and families with fewer resources. It can include free or discounted meals, textbooks, school supplies, and transportation support. Assistance is allocated by income brackets/tiers.

**Secondary Levels** – Secondary Education: Stage of education after Basic Education, usually from 15 to 18 years old (10th, 11th, and 12th school years). It can be scientific-humanistic or professional.

**Special Health Care Needs** – "Physical and mental health conditions that significantly limit the functioning of any organ or system, lead to irregular school attendance, and may compromise the learning process."  
[Decree-Law no. 54/2018](#)

**UNICEF – United Nations Children's Fund** – International organization defending children's rights worldwide, including the rights to education, health, and protection.

**Porto.**

**Porto City Council**

Praça General Humberto Delgado  
4049 – 001 Porto

[geral@cm-porto.pt](mailto:geral@cm-porto.pt)

[www.cm-porto.pt](http://www.cm-porto.pt)

---

Funded by the European Union – NextGenerationEU. However, the opinions expressed are those of the authors alone and do not necessarily reflect the views of the European Union or the European Commission. Neither the European Union nor the European Commission is responsible for these opinions.